



SuperPupil® XL Lens

ULTRA WIDE FIELD SMALL PUPIL PAN RETINAL EXAMINATION

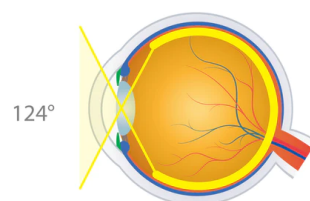


- + OPTIMAL SMALL PUPIL CAPABILITY THROUGH A PUPIL AS SMALL AS 2–3 MM
- + EXCELLENT FOR FUNDUSCOPY THROUGH A MIOTIC PUPIL
- + WIDE FIELD VIEWS PAST THE VORTEX
- + MOST POPULAR CHOICE FOR QUICK UNDILATED SCREENING EXAMS

103°/124°
FIELD OF VIEW

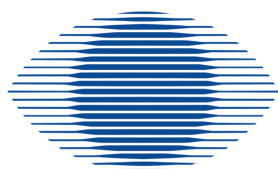
0.45x
IMAGE MAG

2.20x
LASER SPOT MAG



CODICE: VSPXL
CND: Q0299
RDM: 137653

SUPER SERIES	FIELD OF VIEW	IMAGE MAG	LASER SPOT MAG	WORKING DISTANCE	RING DIAMETER	PRIMARY APPLICATION
Super 66*	80° / 96°	1.0x	1.0x	11 mm	34.5 mm	High Magnification View of the Central Retina
SuperField*	95° / 116°	0.76x	1.32x	7 mm	30.0 mm	Wide Field Small Pupil Pan Retinal Examination
Super VitreoFundus*	103° / 124°	0.57x	1.75x	4-5 mm	26.7 mm	Ultra Wide Field Small Pupil Pan Retinal Scanning
SuperPupil* XL	103° / 124°	0.45x	2.20x	4 mm	23.6 mm	Ultra Wide Field Small Pupil Pan Retinal Scanning



SIR oftalmica

DISTRIBUTING EXCELLENCE SINCE 1989

WWW.SIROFTALMICA.COM