



Macula Plus® 5.5 Lens

VISUALIZZAZIONE AD ALTISSIMO INGRANDIMENTO DELLA RETINA CENTRALE



+ ECCELLENTE IMAGING STEREO PER LA DIAGNOSI DI ANOMALIE MACULARI IN MALATTIE COME LA AMD.

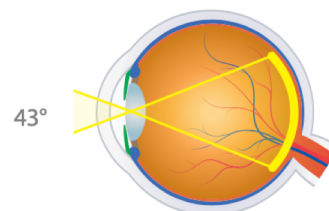
+ LA LENTE BIO A PIÙ ALTO INGRANDIMENTO FACILITA L'ESAME DEI PAZIENTI GERIATRICI

+ L'ADATTATORE PER LA LENTE OFFRE STABILITÀ PER UNA MAGGIORE DISTANZA DI LAVORO

36°/43°
FIELD OF VIEW

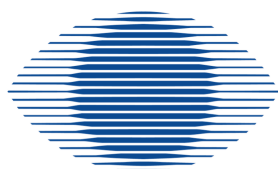
5.50x
IMAGE MAG

0.18x
LASER SPOT MAG



CODICE: VMP5.5
CND: Q0299
RDM: 102573

CLASSIC SERIES	FIELD OF VIEW	IMAGE MAG	LASER SPOT MAG	WORKING DISTANCE	RING DIAMETER	PRIMARY APPLICATION
Macula Plus® 5.5	36° / 43°	5.50x	0.18x	80 mm	63.2 mm	Ultra-high resolution viewing of posterior pole
14D	36° / 47°	4.30x	0.23x	75 mm	57.4 mm	High magnification viewing of posterior pole
15D	36° / 47°	4.11x	0.24x	72 mm	57.4 mm	High magnification viewing of posterior pole
20D	46° / 60°	3.13x	0.32x	50 mm	55.4 mm	General diagnosis and treatment
Pan Retinal® 2.2	56° / 73°	2.68x	0.37x	40 mm	57.4 mm	General diagnosis and treatment
25D	52° / 68°	2.54x	0.39x	38 mm	50.1 mm	Mid-peripheral diagnosis and treatment
28D	53° / 69°	2.27x	0.44x	33 mm	45.9 mm	Small pupil diagnosis and treatment
30D Small	44° / 57°	2.09x	0.48x	31 mm	34.9 mm	Small profile lens for ease of use within the orbit
30D	58° / 75°	2.15x	0.47x	30 mm	48.3 mm	Small pupil diagnosis and treatment
40D	69° / 90°	1.67x	0.60x	20 mm	45.3 mm	Retinal examination and diagnosis at the far periphery
DIGITAL SERIES	FIELD OF VIEW	IMAGE MAG	LASER SPOT MAG	WORKING DISTANCE	RING DIAMETER	PRIMARY APPLICATION
Digital ClearMag	38° / 49°	3.89x	0.26x	60 mm	51.9 mm	Detailed optic disc and posterior pole examination
Digital ClearField	55° / 72°	2.79x	0.36x	37 mm	51.9 mm	Mid and far-peripheral retinal examination



SIR oftalmica

DISTRIBUTING EXCELLENCE SINCE 1989

WWW.SIROFTALMICA.COM