



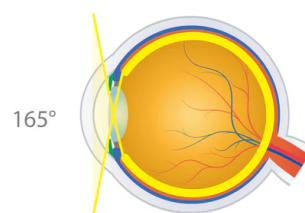
HR Wide Field Lens

WIDE FIELD OF VIEW FOR PAN RETINAL EXAMINATION AND LASER TREATMENTS



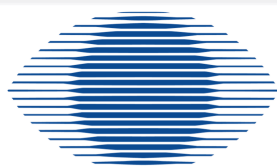
+ SAME FIELD OF VIEW AND IMAGE MAGNIFICATION AS THE CLASSIC FAVORITE SUPER QUAD® 160, BUT AT HALF THE SIZE AND HALF THE WEIGHT + ADVANCED LOW-DISPERSION GLASS REDUCES CHROMATIC ABERRATIONS AND ENSURES EXCELLENT IMAGING TO THE ORA SERRATA + MOST POPULAR LENS FOR PRP

160°/165°
FIELD OF VIEW 0.50x
IMAGE MAG 2.0x
LASER SPOT MAG



CODICE: VHRWF
CND: Q020499
RDM: 104650

LENS	FIELD OF VIEW	IMAGE MAG	LASER SPOT MAG	CONTACT DIAMETER	PRIMARY APPLICATION
HR Wide Field	160° / 165°	0.50x	2.0x	16.5 mm	Wide Field of View for Pan Retinal Examination and Laser Treatments
Super Quad® 160	160° / 165°	0.50x	2.0x	Flange 16.5 mm NF 15.7 mm	Wide Field of View for Pan Retinal Examination and Laser Treatments
QuadrAspheric®	120° / 144°	0.51x	1.97x	Flange 15.5 mm ANF+ 15.5 mm NF 13.6 mm	Wide Field View for Pan Retinal Examination & Laser in Small Pupils
Area Centralis®	70° / 84°	1.06x	0.94x	Flange 15.5 mm ANF+ 15.5 mm NF 13.5 mm	High Magnification Examination and Treatment of the Posterior Pole
HR Centralis	74° / 88°	1.08x	0.93x	15.5 mm	High Magnification for Small Pupil Posterior Pole Treatment
Super Macula® 2.2	60° / 78°	1.49x	0.67x	15.5 mm	High Magnification Examination and Treatment of the Posterior Pole
TransEquator®	110° / 132°	0.70x	1.44x	Flange 15.5 mm ANF+ 15.5 mm NF 13.2 mm	Mid-Peripheral Diagnosis and Focal/Grid Laser Therapy
Equator Plus®	114° / 137°	0.44x	2.27x	ANF+ 15.5 mm NF 13.6 mm	Small Pupil Diagnosis and Treatment
Quad Pediatric	100° / 120°	0.55x	1.82x	10.0 mm	ROP and Other Pediatric Conditions
PDT Laser	115° / 137°	0.67x	1.50x	15.5 mm	Photodynamic Therapy



SIR oftalmica

DISTRIBUTING EXCELLENCE SINCE 1989

WWW.SIROFTALMICA.COM