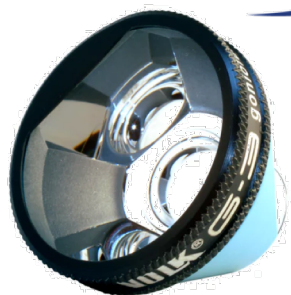




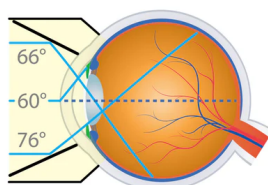
G-3 Gonio Lens



60°/66°/76°
MIRROR ANGLES

1.06x
IMAGE MAG

0.94x
LASER SPOT MAG



3-MIRROR, ALL-GLASS DESIGN FOR ANTERIOR, PERIPHERAL, AND EQUATORIAL VIEWING (GOLDMANN-STYLE LENS)

+ 60° MIRROR PROVIDES A VIEW OF THE IRIDOCORNEAL ANGLE TO VISUALIZE THE TRABECULAR MESHWORK

+ 66° MIRROR PROVIDES A RETINAL IMAGE FROM THE EQUATOR TO THE ORA SERRATA

+ 76° MIRROR PROVIDES A VIEW OF THE MIDPERIPHERAL/FAR-PERIPHERAL RETINA

+ CENTRAL LENS ENABLES CLEAR VIEWING OF THE POSTERIOR POLE

+ AVAILABLE IN TWO FORMATS: FLANGED (CAN BE USED FOR LASER, HOWEVER, NOT COMPATIBLE WITH SLT) AND NO FLANGED (RECOMMENDED FOR ROUTINE GONIOSCOPY WITHOUT INDENTATION)

CODICE: VG3
VG3NF (senza flangia)
VG3MININF (versione pediatrica, senza flangia)

CND: Q0299

RDM: 104531

LENS	MIRROR ANGLES	IMAGE MAG	LASER SPOT MAG	CONTACT DIAMETER	PRIMARY APPLICATION
G-1 Gonio	62°	1.50x	0.67x	15 mm	Detailed Viewing of the Trabecular Meshwork
G-1 Gonio, No Flange	62°	1.50x	0.67x	8.4 mm	Detailed Viewing of the Trabecular Meshwork
G-2 Gonio	60° / 64°	1.50x	0.67x	15 mm	Detailed and a Broad View of the Anterior Chamber
G-2 Gonio, No Flange	60° / 64°	1.50x	0.67x	8.4 mm	Detailed and a Broad View of the Anterior Chamber
G-3 Gonio (Goldmann Style)	60° / 66° / 76°	1.06x	0.94x	15 mm	View of the Iridocorneal Angle/ Mid-peripheral/Peripheral Retina/Retinal Image from the Equator to the Ora Serrata
G-3 Gonio, No Flange	60° / 66° / 76°	1.03x	0.97x	11.4 mm	View of the Iridocorneal Angle/ Mid-peripheral/Peripheral Retina/Retinal Image from the Equator to the Ora Serrata
G-3 Gonio Mini, No Flange	60° / 66° / 76°	1.0x	1.0x	9.6 mm	View of the Iridocorneal Angle/ Mid-peripheral/Peripheral Retina/Retinal Image from the Equator to the Ora Serrata
3 Mirror, No Flange	60° / 66° / 76°	0.90x	1.11x	15.7 mm	View of the Iridocorneal Angle/ Mid-peripheral/Peripheral Retina/Retinal Image from the Equator to the Ora Serrata
3 Mirror, ANF+	60° / 66° / 76°	0.90x	1.11x	18.1 mm	View of the Iridocorneal Angle/ Mid-peripheral/Peripheral Retina/Retinal Image from the Equator to the Ora Serrata
G-4 Gonio	4x64°	1.0x	1.0x	15 mm	Examination of the Trabecular Meshwork
G-4 Gonio, No Flange (Sussman & Posner Style)	4x64°	1.0x	1.0x	8.1 mm	Examination of the Trabecular Meshwork
G-4 High Mag Gonio	4x64°	1.50x	0.67x	15 mm	Magnified Detailed Viewing of the Trabecular Meshwork
G-4 High Mag Gonio, No Flange	4x64°	1.50x	0.67x	8.1 mm	Magnified Detailed Viewing of the Trabecular Meshwork
Mini 4-Mirror	4x62°	0.9x	1.11x	15 mm	Easy Manipulations within the Orbit to View Trabecular Meshwork
G-6 Gonio, No Flange	6x63°	1.0x	1.0x	8.1 mm	Panoramic View of the Anterior Chamber without Rotation