

SURGICAL LENSES

VITRECTOMY | SINGLE USE | ACCESSORIES

VITRECTOMY FOR A RETINAL DETACHMENT WITH MULTIPLE TEARS

A 25-gauge Vitrectomy was performed using the **Miniquad XL SSV**. After clearing the core and peripheral vitreous, PFCL heavy liquid was injected to flatten and stabilize the posterior pole. Vitreous attached to the margins of breaks was also removed. Air fluid exchange was done and endodrainage was carried out through an existing break. Once the retina was flat, 360° endolaser was carried out around the breaks.

Manish Nagpal, MD FRCS FASRS
Director of Retina Foundation,
Ahmedabad, India

INDIRECT VITRECTOMY LENSES

Volk offers a suite of vitrectomy lenses over a range of optical profiles, designed to cater to the full spectrum of vitrectomy procedures with the highest quality Volk optics for the best surgical visualization.

LENS	FIELD OF VIEW	IMAGE MAG	CONTACT DIAMETER	PRIMARY APPLICATION
HRX Vit Lens	130° / 150°	0.43x	11.35 mm / SSV 16.0 mm	Far-Peripheral Indirect Vitreoretinal Procedures
Mini Quad® XL	112° / 134°	0.39x	11.35 mm / SSV 16.0 mm	Indirect Viewing and Treatment of Peripheral Retinal Disorders
Mini Quad®	106° / 127°	0.39x	11.35 mm / SSV 16.0 mm	Indirect Viewing and Treatment of Peripheral Retinal Disorders
DynaView	95° / 127°	0.39x	8.08 mm	Treatment of Retinopathy of Prematurity
Central Retinal	73° / 88°	0.71x	11.35 mm / SSV 16.0 mm	High Magnification Indirect Viewing and Treatment of the Central Retina
Super Macula®	64° / 77°	1.03x	11.35 mm	Highest Magnification Indirect Viewing and Treatment of the Central Retina

HRX Vit Lens

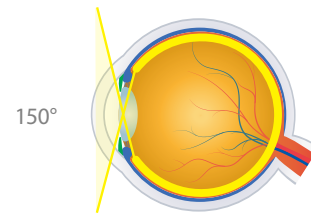


VHRXVIT VHRXVITSSV
Self Stabilizing (shown)

PRIMARY APPLICATION
Far-Peripheral Indirect Vitreoretinal Procedures

- + High index glass delivers widest field, distortion-free retinal views of any surgical lens
- + Small profile ring facilitates instrument manipulation and surgical procedures
- + Available in standard and patented self-stabilizing contact (SSV) options for best ergonomics
- + Ideal for retinal detachments, PVR, giant retinal tears and works seamlessly in fluid and air filled eyes
- + Available in autoclave sterilizable design (see page 52)

130°/150°
FIELD OF VIEW IMAGE MAG



Mini Quad® XL

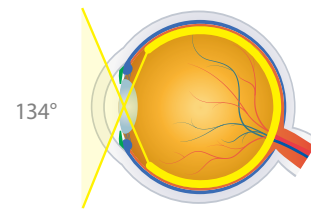


VMQXLVIT VMQXLVITSSV
Self Stabilizing

PRIMARY APPLICATION
Indirect Viewing and Treatment of Peripheral Retinal Disorders

- + Wide field of view of the entire retina including the ora serrata
- + Ideal for retinal detachments, giant retinal tears, PDR, including diabetic cases requiring endolaser to the periphery
- + Available in standard and self-stabilizing contact (SSV) options for best ergonomics

112°/134°
FIELD OF VIEW IMAGE MAG



“CRYSTAL CLEAR VISIBILITY & STABILITY

The Volk HRX and MiniQuad XL are my absolute go-to lenses for all my vitrectomy procedures. The wide-field view offered by these lenses allows for crystal clear visibility through all mediums such as fluid, air, PFCL, or silicon oil. Vitrectomy is all about *The View* and these contact lenses provide the best possible view to operate and to get optimum, distortion-free video footage for teaching and academics. Complex cases such as Retinal Detachments with PVR, Giant Retinal Tears, and Diabetic Tractional Detachments have become easier to manage as the Mini Quad XL and HRX lenses provide a seamless view of the extreme periphery to do a thorough clean-up and flatten the retina effectively. The self-stabilizing (SSV) component adds superb stability to this

lens and I don't need any ring or assistant to support it for me. The only time I shift to another lens is when I want to do fine work on the macula like epiretinal membrane peeling or ILM peeling, which is when I move to the Volk Flat SSV lens for that part of the procedure to get the best magnified stereoscopic view of the macula.”

- Manish Nagpal, MD FRCS FASRS

Director of Retina Foundation, Ahmedabad, India

Mini Quad®

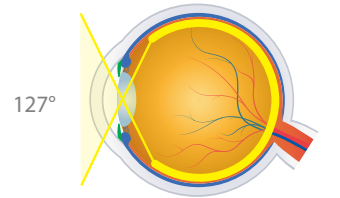


VMQVIT (shown) VMQVITSSV
Self Stabilizing

PRIMARY APPLICATION
Indirect Viewing and Treatment of Peripheral Retinal Disorders

- + Wide field of view of the entire retina including the ora serrata
- + Smaller ring facilitates manipulation within the orbit
- + Ideal for retinal detachments, PDR and giant retinal tears
- + Available in standard and self-stabilizing contact (SSV) options
- + Available in autoclave sterilizable design (see page 52)

106°/127°
FIELD OF VIEW IMAGE MAG



DynaView

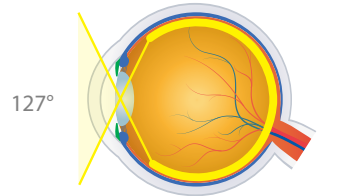


VDDVIT

PRIMARY APPLICATION
Treatment of Retinopathy of Prematurity

- + Enhanced design provides wide field imaging out to the ora serrata
- + Minified housing facilitates extension of instruments
- + Reduced contact size ideal for pediatric examination and treatment such as bilateral retinal detachment, vitreous hemorrhage, ROP

95°/127°
FIELD OF VIEW IMAGE MAG



Central Retinal

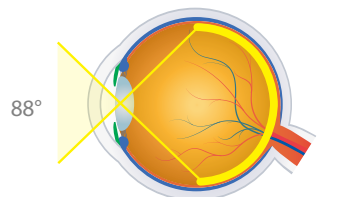


VCRLVIT (shown) VCRLVITSSV
Self Stabilizing

PRIMARY APPLICATION
High Magnification Indirect Viewing and Treatment of the Central Retina

- + High resolution, high magnification imaging to the equator
- + Ideal for epiretinal membranes, diabetic membranes, vitreo macular traction, macular holes, submacular surgeries, and other small detail procedures of the central retina
- + Available in standard and self-stabilizing contact (SSV) options
- + Available in autoclave sterilizable design (see page 52)

73°/88°
FIELD OF VIEW IMAGE MAG



Super Macula®

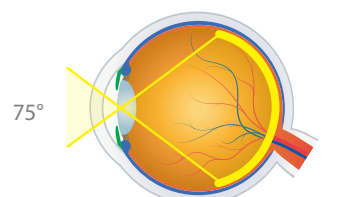


VSMACVIT

PRIMARY APPLICATION
Highest Magnification Indirect Viewing and Treatment of the Central Retina

- + High resolution, highest magnification imaging of the central retina
- + Provides excellent magnification for fine peeling of epiretinal membrane as well as ILM. Ideal for macular holes, vitreo macular traction, and submacula surgeries
- + 2x field of view compared to plano/concave direct image lenses

64°/77°
FIELD OF VIEW IMAGE MAG



AUTOCLAVABLE INDIRECT VITRECTOMY LENSES

LENS	FIELD OF VIEW	IMAGE MAG	CONTACT DIAMETER	PRIMARY APPLICATION
HRX ACS®	130° / 150°	0.43x	11.38 mm / SSV 16.0 mm	Widest Field Views for Vitreoretinal Procedures
Mini Quad® ACS®	106° / 127°	0.48x	11.38 mm / SSV 16.0 mm	Peripheral Indirect Vitreoretinal Procedures
Central Retinal ACS®	73° / 88°	0.71x	11.38 mm / SSV 16.0 mm	High Magnification Indirect Vitreoretinal Procedures

HRX ACS®

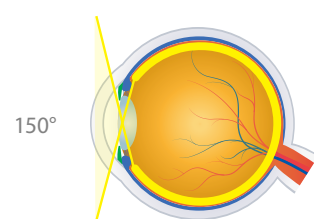


VHRXVITSSVACS VHRXVITACS
Self Stabilizing (shown)

PRIMARY APPLICATION Widest Field Views for Vitreoretinal Procedures

- + Superior high-index glass design ensures widest field views of any vitrectomy lens
- + Advanced aspheric design provides unmatched high resolution imaging
- + Ideal for retinal detachments, PDR and giant retinal tears
- + Steam sterilizable for reduced processing time

130°/150°
FIELD OF VIEW
0.43x
IMAGE MAG



Mini Quad® ACS®

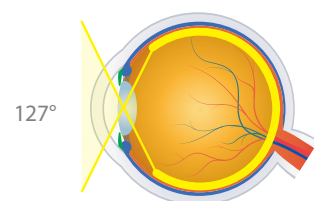


VMQVITSSVACS VMQVITACS
Self Stabilizing (shown)

PRIMARY APPLICATION Peripheral Indirect Vitreoretinal Procedures

- + Steam sterilizable for reduced processing time
- + Smaller ring facilitates manipulation within the orbit
- + Ideal for retinal detachments, PDR and giant retinal tears

106°/127°
FIELD OF VIEW
0.48x
IMAGE MAG



Central Retinal ACS®

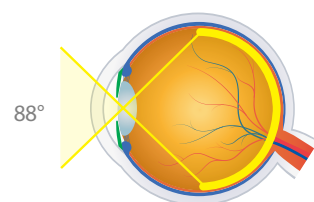


VCRLVITSSVACS VCRLVITACS
Self Stabilizing (shown)

PRIMARY APPLICATION High Magnification Indirect Vitreoretinal Procedures

- + High resolution, high magnification imaging to the equator
- + Steam sterilizable for reduced processing time
- + Ideal for epiretinal membranes, diabetic membranes, vitreo macular traction, macular holes, submacular surgeries, and other small detail procedures of the central retina

73°/88°
FIELD OF VIEW
0.71x
IMAGE MAG



AUTOCLAVABLE SURGICAL BIO LENSES

Combine the optical excellence of Volk lenses with the comfort of reduced processing time in a surgical environment with the autoclavable lens line.

LENS	FIELD OF VIEW	IMAGE MAG	LASER SPOT MAG	WORKING DISTANCE	RING DIAMETER	PRIMARY APPLICATION
20D ACS®	46° / 60°	3.13x	0.32x	50 mm	55.4 mm	Industry Standard Diagnostic Lens in an Autoclavable Format
28D ACS®	53° / 69°	2.27x	0.44x	33 mm	45.9 mm	Fundus Scanning Lens in an Autoclavable Format

20D ACS®

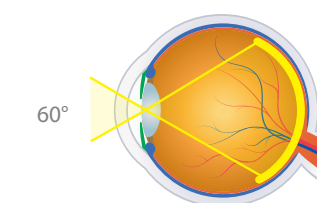


V20LCACSPV

PRIMARY APPLICATION Industry Standard Diagnostic Lens in an Autoclavable Format

- + Steam sterilizable for use in a surgical environment
- + High quality Permaview™ glass withstands the rigors of repeated sterilization
- + Perfectly corrected for field curvature, astigmatism, and aberrations

46°/60°
FIELD OF VIEW
3.13x
IMAGE MAG
0.32x
LASER SPOT MAG



28D ACS®

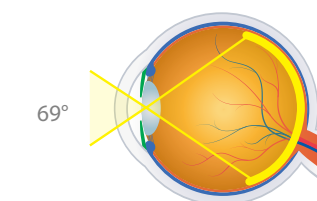


V28LCACSPV

PRIMARY APPLICATION Fundus Scanning Lens in an Autoclavable Format

- + Steam sterilizable for use in a surgical environment
- + High quality Permaview™ glass withstands the rigors of repeated sterilization
- + Excellent for small pupil diagnosis and treatment including LIO (Laser Indirect Ophthalmoscope)

53°/69°
FIELD OF VIEW
2.27x
IMAGE MAG
0.44x
LASER SPOT MAG

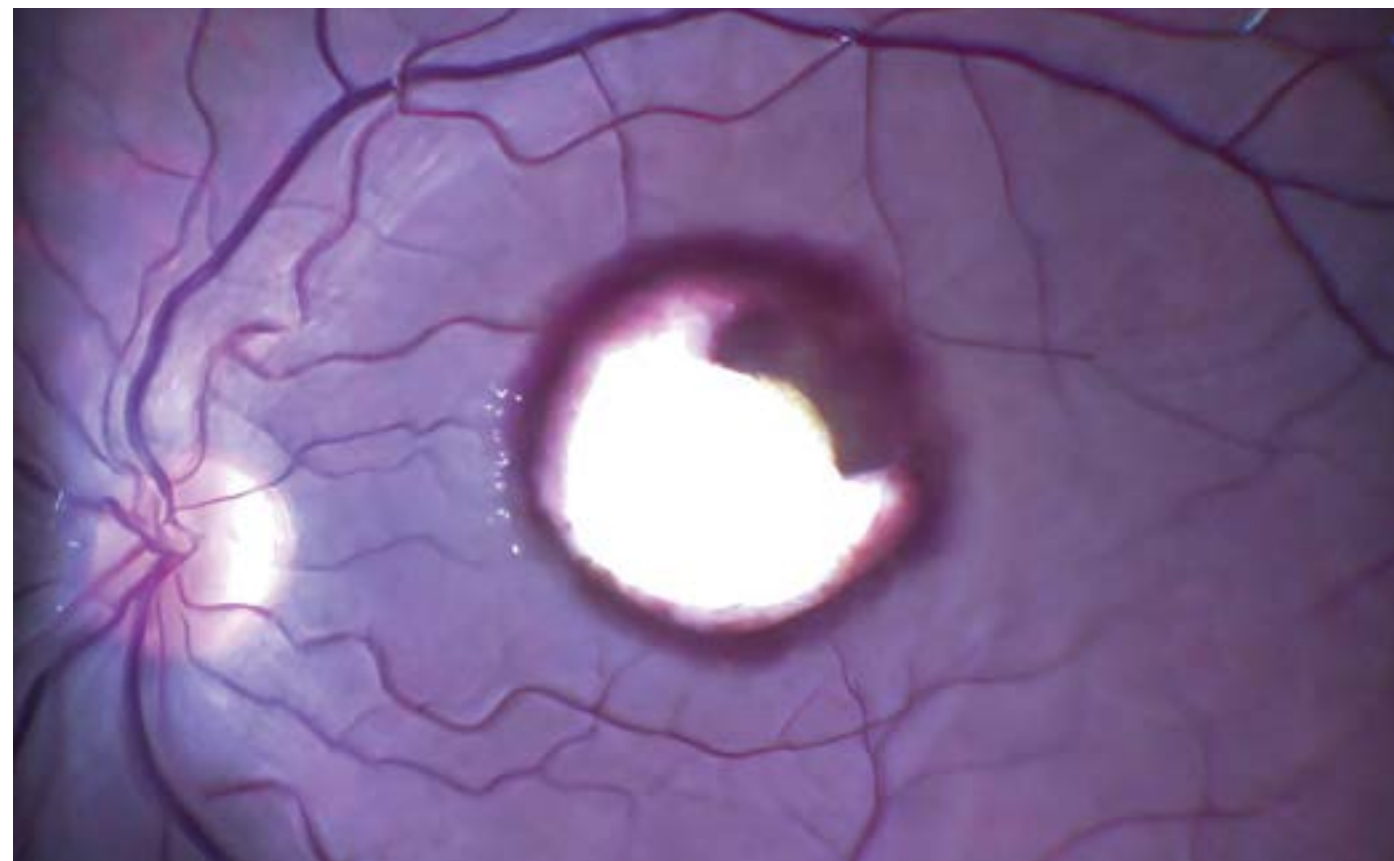


HIGH RESOLUTION (HR) DIRECT VITRECTOMY LENSES

Volk's High Resolution Direct Image lenses utilize a high-index glass to deliver superior image quality. This robust glass type is highly resistant to the rigors of continued steam sterilization and will not deteriorate or discolor.

Volk's No Stabilizing Ring (NSR) range of lenses allow suitable stability without the need for suturing or stabilizing rings. Two of the lenses in the group are also available in a no suture ring design. The profiles of these two lenses allows them to stabilize suitably without the need for an additional stabilizing ring.

LENS	FIELD OF VIEW	IMAGE MAG	CONTACT DIAMETER	PRIMARY APPLICATION
HR Direct 1x	30°	1.0x	11.2 mm	Direct Image Vitreoretinal Surgery of the Central Retina
HR Direct Bi-Concave	45° (Mid Field, Fluid) 30° (AFX, Air)	0.49x (Mid Field, Fluid) 1.0x (AFX, Air)	11.2 mm	Wide Field and AFX (Air Fluid Exchange) Direct Image Vitreoretinal Surgery
HR Direct High Mag	20°	1.35x	11.2 mm	High Magnification Direct Image Vitreoretinal Surgery of the Central Retina
HR Direct 20° Prism	40° (Offset 20°)	0.53x	11.2 mm	Off Axis Wide Field Direct Image Vitreoretinal Surgery



A case of sub ILM blood collection in which the ILM was peeled to expose the blood, followed by aspiration. The blood is partly whitish in color due to de-hemoglobinization which occurs over time. A Flat SSV Lens was used for this procedure.
 - Image courtesy of Dr. Manish Nagpal, Ahmedabad, India

HR Direct 1x

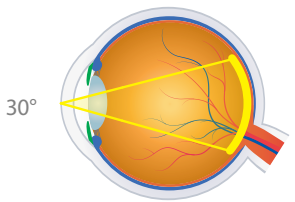


Stabilizing Ring: **VHRD1XACS**
 No Stabilizing Ring: **VHRD1XNSRACS**

PRIMARY APPLICATION Direct Image Vitreoretinal Surgery of the Central Retina

- + High-index glass delivers highest resolution direct image of the central retina
- + Highly suited for repeated steam sterilization with no material degradation
- + Standard design fits all major suture rings
- + Unique optional no stabilizing ring (NSR) design available
- + Ideal for visualizing the posterior pole in ILM peeling

30° FIELD OF VIEW
1.0x IMAGE MAG



HR Direct Bi-Concave

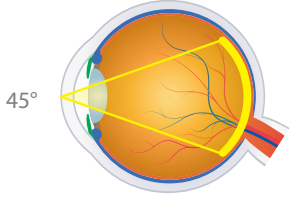


VHRDBCACS

PRIMARY APPLICATION Wide Field and AFX (Air Fluid Exchange) Direct Image Vitreoretinal Surgery

- + High-index glass in a bi-concave design delivers highest resolution imaging for wide field and AFX procedures
- + Ideal for visualizing fundus through an air filled cavity
- + Highly suited for repeated steam sterilization with no material degradation
- + Standard design fits all major suture rings

45° (Mid Field) 0.49x (Mid Field)
30° (AFX) 1.0x (AFX)
FIELD OF VIEW IMAGE MAG



HR Direct High Mag

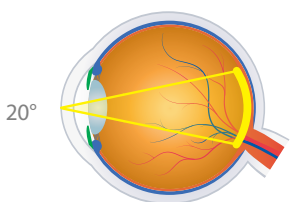


Stabilizing Ring: **VHRDHMACS**
 No Stabilizing Ring: **VHRDHMNSRACS**

PRIMARY APPLICATION High Magnification Direct Image Vitreoretinal Surgery of the Central Retina

- + High-index glass delivers highest resolution, high magnification of the central retina
- + Best suited for detailed work of the macula
- + Highly suited for repeated steam sterilization with no material degradation
- + Standard design fits all major suture rings
- + Unique optional no stabilizing ring (NSR) design available

20° FIELD OF VIEW
1.35x IMAGE MAG



HR Direct 20° Prism

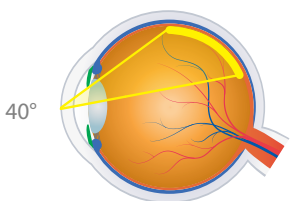


VHRD20PACS

PRIMARY APPLICATION Off Axis Wide Field Direct Image Vitreoretinal Surgery

- + High-index glass delivers highest resolution off axis (20°) direct image retinal views
- + Improved design delivers wider field (40°) off axis views
- + Highly suited for repeated steam sterilization with no material degradation
- + Ideal for visualizing the posterior peripheral fundus through direct imaging

40° (Offset 20°) FIELD OF VIEW
0.53x IMAGE MAG



DIRECT VITRECTOMY LENSES

SELF STABILIZING (SSV)

Volk's Surgical Vitrectomy lenses were developed in collaboration with Dr. K.V Chalam and are available in 7 designs to meet all the visualization needs of a retina surgeon. The SSV® (self-stabilizing) contact element eliminates the need for sutures or rings and provides excellent stability. The compact lens design provides greater spatial access without interfering with instruments.

LENS	FIELD OF VIEW	IMAGE MAG	CONTACT DIAMETER	PRIMARY APPLICATION
Direct Image Flat SSV® (ACS®)	30°	0.92x	11.9 mm	Routine Direct Image Vitreoretinal Surgery of the Central Retina
Direct Image High Mag SSV® (ACS®)	28°	1.50x	11.9 mm	High Magnification Direct Image Vitreoretinal Surgery of the Central Retina
Direct Image Mid Field SSV® (ACS®)	40°	0.50x	8.0 mm	Wide field of view for pan retinal examination and laser treatments
Direct Image 15° Prism SSV® (ACS®)	30° (15° Offset)	0.90x	11.9 mm	Off Axis Direct Image Vitreoretinal Surgery
Direct Image 30° Prism SSV® (ACS®)	30° (30° Offset)	0.90x	10.0 mm	Off Axis Direct Image Vitreoretinal Surgery
Direct Image 45° Prism SSV® (ACS®)	30° (45° Offset)	0.90x	10.0 mm	Off Axis Direct Image Vitreoretinal Surgery
Direct Image AFX SSV® (ACS®) (Air Fluid Exchange - Air Filled Eye)	30°	0.82x	11.9 mm	Direct Image Vitreoretinal Surgery During Air Fluid Exchange Procedures

Direct Image Flat SSV® ACS®

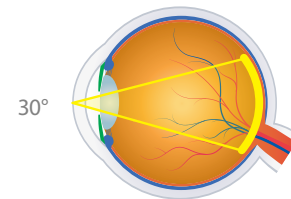


VFLATSSVACS

PRIMARY APPLICATION
Routine Direct Image Vitreoretinal Surgery of the Central Retina

- + Delivers high resolution direct image of the central retina
- + Steam sterilizable for reduced processing time
- + Most popular lens for high resolution macula work such as epiretinal membrane peeling and ILM peeling

30° FIELD OF VIEW
0.92x IMAGE MAG



Direct Image High Mag SSV® ACS®

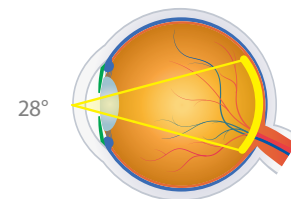


VFHMSSVACS

PRIMARY APPLICATION
High Magnification Direct Image Vitreoretinal Surgery of the Central Retina

- + Delivers high resolution, high magnification direct image of the central retina
- + Steam sterilizable for reduced processing time
- + Ideal for detailed work of the macula with high magnification like macular holes, membrane peeling, tractional retinal detachments

28° FIELD OF VIEW
1.50x IMAGE MAG



Direct Image Mid Field SSV® ACS®

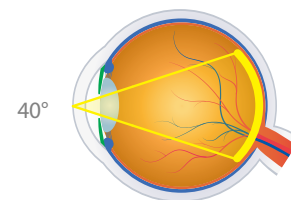


VMFSSVACS

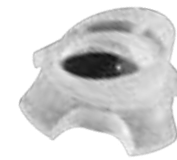
PRIMARY APPLICATION
Wide Field Direct Image Vitreoretinal Surgery

- + Bi-concave design provides widest field available in a direct image lens
- + Can be used for air/gas exchange procedures
- + Steam sterilizable for reduced processing time

40° FIELD OF VIEW
0.50x IMAGE MAG



Direct Image 15° Prism SSV® ACS®

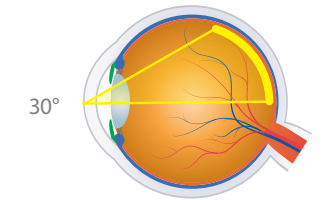


VPRISMSSVACS

PRIMARY APPLICATION
Off Axis Direct Image Vitreoretinal Surgery

- + Design delivers 15° off axis retinal views
- + Steam sterilizable for reduced processing time
- + Ideal for direct visualization of the mid-peripheral fundus

30° (15° Offset) FIELD OF VIEW
0.90x IMAGE MAG



Direct Image 30° Prism SSV® ACS®

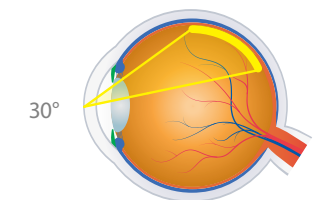


V30PRISMSSVACS

PRIMARY APPLICATION
Off Axis Direct Image Vitreoretinal Surgery

- + Design delivers 30° off axis retinal views
- + Steam sterilizable for reduced processing time
- + Ideal for direct visualization of the posterior peripheral fundus

30° (30° Offset) FIELD OF VIEW
0.90x IMAGE MAG



Direct Image 45° Prism SSV® ACS®

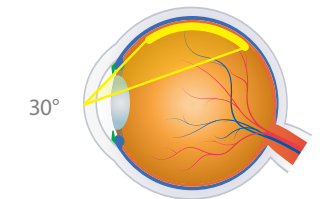


V45PRISMSSVACS

PRIMARY APPLICATION
Off Axis Direct Image Vitreoretinal Surgery

- + Design delivers 45° off axis retinal views
- + Steam sterilizable for reduced processing time
- + Ideal for direct visualization of the posterior peripheral fundus

30° (45° Offset) FIELD OF VIEW
0.90x IMAGE MAG



Direct Image AFX SSV® ACS®

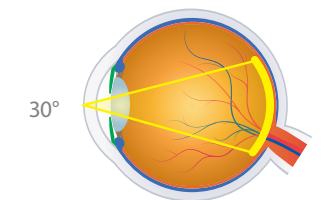


VAFXSSVACS

PRIMARY APPLICATION
Direct Image Vitreoretinal Surgery During Air Fluid Exchange Procedures

- + Delivers high resolution central retinal imaging
- + Steam sterilizable for reduced processing time
- + Ideal for Air Fluid exchange procedures

30° FIELD OF VIEW
0.82x IMAGE MAG



SINGLE-USE SURGICAL BIO LENSES



Volk®1 Single-Use Surgical BIO lenses combine high-quality optics that Volk is known for and the convenience of pre-sterilization into a ready-to-use design. Volk's single-use surgical BIO lenses enable convenient pre- and post-operative examination and laser treatment.

These single-use lenses minimize the risk of infection and cross-contamination and reduce the cost and time associate with reprocessing.

Single-use lenses are pre-sterilized and individually-packaged in a Tyvek® pouch. Single-use lenses are sold in boxes of 10.

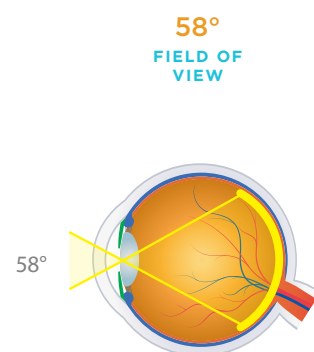
Volk®1 Single-Use 20D



V20LCD10

PRIMARY APPLICATION
Industry Standard Diagnostic Lens in a Single-Use Format

- + Perfectly balanced magnification and field of view make this lens ideal for general diagnostic examination
- + Provides excellent views of the optic disc and macula
- + Anti-reflective coating greatly reduces distracting glare



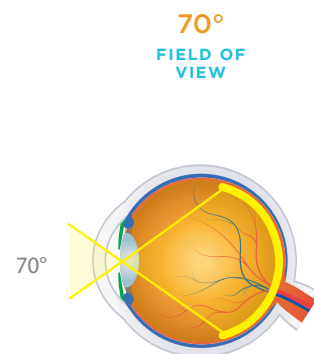
Volk®1 Single-Use 28D



V28LCD10

PRIMARY APPLICATION
Fundus Scanning Lens in a Single-Use Format

- + Excellent for wide field examination and treatment through a small pupil
- + Compatible with LIO (Laser Indirect Ophthalmoscope)
- + Excellent lens for ROP rounds to reduce infection risk in high-risk babies



“SAFE & EFFICIENT

Since the reports of using reusable lenses during Retinopathy of Prematurity (ROP) screening rounds were linked to infection transmission and serious adverse outcomes in the NICU, I have explored different options to maintain sterile equipment for use during my ROP screening rounds. I feel that the quality and field-of-view of the Volk Single-Use 28D lens is equivalent to the standard and I currently use a separate Volk Single-Use 28D lens for each infant during ROP screening rounds to reduce the risk of infection transmission between infants being examined. I have found that using Volk Single-Use 28D lenses for ROP screening rounds is more efficient than following a protocol to disinfect and reuse standard lenses between infants being screened.”

- S. Grace Prakalapakorn, MD, MPH
Pediatric Ophthalmologist, Durham, NC, USA

SINGLE-USE DIRECT VITRECTOMY LENSES



Available in six popular designs, these lenses deliver high resolution direct-image retinal views for all vitrectomy procedures. Designed in collaboration with Dr. K.V. Chalam, the SSV® (self-stabilizing) contact design element eliminates the need for sutures or rings. They are packaged individually in easy-to-open single-use Tyvek® pouches and are boxed in quantities of 10 lenses. These single-use lenses minimize the risk of infection and cross-contamination and reduce the cost and time associate with reprocessing.

LENS	FIELD OF VIEW	IMAGE MAG	CONTACT DIAMETER	PRIMARY APPLICATION
Volk®1 Single-Use Flat Standard	36°	1.0x	14.8 mm	Routine Direct Image Vitreoretinal Surgery of the Central Retina
Volk®1 Single-Use Flat SSV®	30°	0.92x	16.0 mm	Routine Direct Image Vitreoretinal Surgery of the Central Retina
Volk®1 Single-Use Magnifying	30°	1.50x	14.8 mm	High Magnification Direct Image Vitreoretinal Surgery of the Central Retina
Volk®1 Single-Use Wide Field	48°	0.50x	14.8 mm	Wide Field Direct Image Vitreoretinal Surgery
Volk®1 Single-Use Bi-Concave	25°	0.80x	14.8 mm	Direct Image Vitreoretinal Surgery During Air Fluid Exchange
Volk®1 Single-Use 30° Prism	33° (Offset 30°)	1.0x	14.8 mm	Off Axis Direct Image Vitreoretinal Surgery

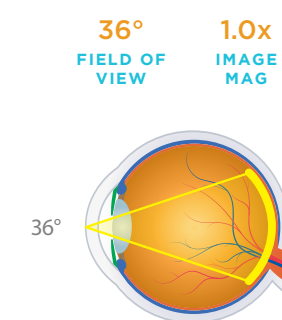
Volk®1 Single-Use Flat Standard



VFD10

PRIMARY APPLICATION
Routine Direct Image Vitreoretinal Surgery of the Central Retina

- + Ideal for visualizing the posterior pole in ILM peeling
- + Silicone ring base



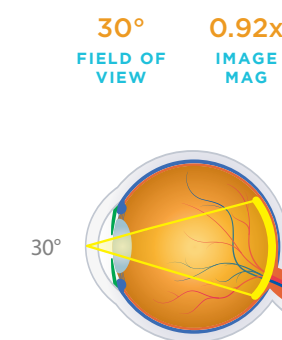
Volk®1 Single-Use Flat Self Stabilizing SSV®



VFLATSSVD10

PRIMARY APPLICATION
Routine Direct Image Vitreoretinal Surgery of the Central Retina

- + Ideal for visualizing the posterior pole in ILM peeling
- + Patented SSV (self-stabilizing) feet for maximum stability and greater access for instrumentation when working closer to the center axis.



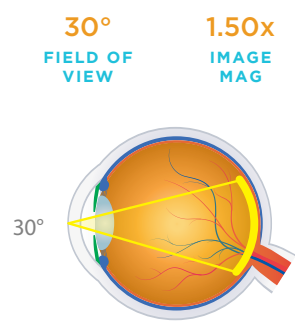
Volk®1 Single-Use Magnifying



VMD10

PRIMARY APPLICATION
High Magnification Direct Image Vitreoretinal Surgery of the Central Retina

- + Ideal for detailed macular work due to high 1.50x magnification
- + Silicone ring base



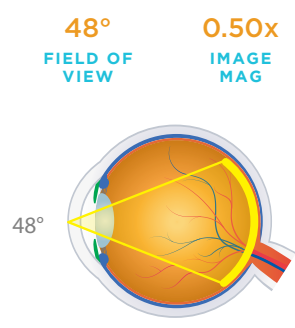
Volk® Single-Use Wide Field



VWFD10

PRIMARY APPLICATION
Wide Field Direct Image Vitreoretinal Surgery

- + Ideal for wide field imaging of the posterior pole
- + Silicone ring base



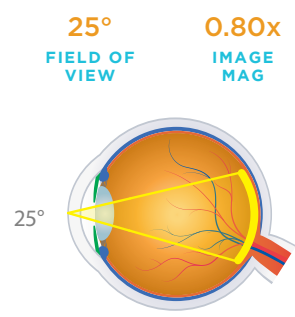
Volk®1 Single-Use Bi-Concave



VBCD10

PRIMARY APPLICATION
Direct Image Vitreoretinal Surgery During Air Fluid Exchange

- + Ideal for air-fluid exchange procedures
- + Silicone ring base



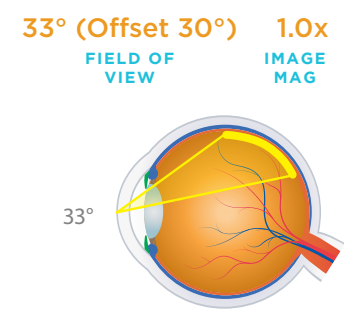
Volk®1 Single-Use 30° Prism



V30PD10

PRIMARY APPLICATION
Off Axis Direct Image Vitreoretinal Surgery

- + Ideal for direct visualization of the posterior peripheral fundus
- + Silicone ring base



SURGICAL ACCESSORIES

Suture Ring



VSRS2

PRIMARY APPLICATION
Provides a Stable Lens Platform During Vitreoretinal Surgery

- + Premium surgical implant grade titanium for optimal durability and ease of sterilization
- + Larger radius provides enhanced functionality and safety during use
- + Compatible with all Volk direct and indirect contact vitrectomy lenses (except SSV® styles)

Infusion Handle



VINFHAN

PRIMARY APPLICATION
Infusion of Saline Solution Beneath the Lens During Vitreoretinal Surgery

- + Flushes blood and debris providing a clear view during surgery
- + Autoclave sterilizable for reduced processing time
- + Ideal for diabetic surgery

Vitreolens Handle



DynaView Vit, Mini Quad Vit: VVITHAN-LG

Central Retinal Vit, HRX Vit, Super Macula Vit, Mini Quad XL Vit, Central Retinal ACS®, HRX ACS®, Mini Quad® ACS®: VVITHAN-MQXL

PRIMARY APPLICATION
Holding and Stabilization of Lenses During Vitreoretinal Surgery

- + Holds vitrectomy lenses stably to assist during vitreoretinal surgery
- + Malleability allows user to bend the handle to suit their preference
- + Autoclave sterilizable for reduced processing time

Sterilization Tray



Large Tray: VSCB

Small Tray: VSCA

PRIMARY APPLICATION
Sterilization of Ophthalmic Lenses

- + Autoclave safe and approved for use with ETO
- + Small tray (2.7" x 1.5" x 1.25") houses Volk surgical and smaller indirect and slit lamp lenses
- + Large tray (6" x 2.5" x 1.25") houses the largest Volk lenses and accessories including vitrectomy handles

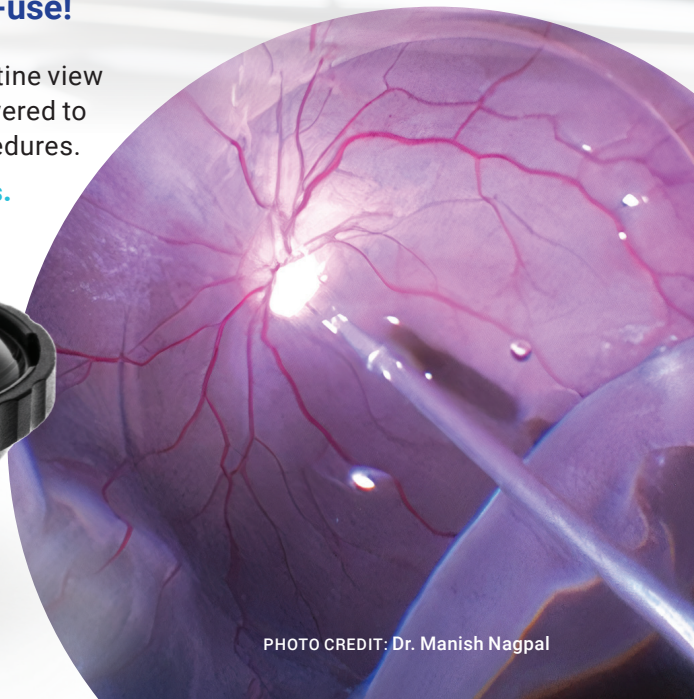
VOLK[®]1

Single-Use Indirect
Vitreotomy Lens with SSV

Widest field of view in single-use!

With Volk's unmatched clarity and pristine view beyond the ora serrata, you're empowered to master even the most complex procedures.

Don't be confined by your tools.
Every OR needs this lens.





See the *Unseen*

Volk's wide view reveals every hidden detail, so you can confidently tackle retinal detachments and elusive tears without limitation – **spend less time torquing the eye and more time delivering exceptional care.**



Crystal Clear, *Every Time*

Deliver enhanced patient outcomes harnessing the power of Volk's unmatched double-aspheric optics every **SINGLE** time.



Stability Designed *by a Surgeon for Surgeons*

Developed in collaboration with Dr. KV Chalam, **Self-stabilizing feet ensure superior stability with minimal instrument interference.**



Precision Matters

Eliminate distortion and uncertainty due to corneal abnormalities or reflections with direct corneal placement regardless of patient-to-patient variation.



Includes optional handle that bends for customized fit

106°
FIELD OF
VIEW

0.55x
IMAGE
MAG

VOLK OPTICAL INC.

7893 Enterprise Dr
Mentor, OH 44060 USA

+1 (440) 942-6161
+1 (800) 345-8655



@volkoptical



volk@volk.com



Volk Optical

SURGICAL GONIO LENSES

Volk's Surgical Gonioprism lenses leverage the same proprietary optical design and manufacturing principles as Volk's diagnostic lenses. Each surgical gonio lens is designed and tested in partnership with numerous surgeons resulting in the best optical clarity, maximum visualization, surgeon & microscope friendly ergonomics, and optimized for patient comfort.

LENS	IMAGE MAG	CONTACT DIAMETER	HANDLE LENGTH	PRIMARY APPLICATION
VVG Lens	1.20x	10.2 mm	84 mm	Direct Views for Micro-Invasive Glaucoma Surgery (MIGS) and all Intraoperative Gonio Procedures
Surgical Gonio Lens	1.20x	10.3 mm	75 mm	Direct Views for Intraoperative Gonio Procedures

Volk Vold Gonio (VVG) Lens

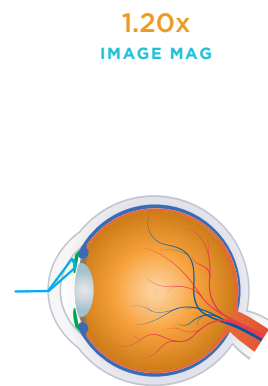


VTSVVG

PRIMARY APPLICATION

Direct Views for Micro-Invasive Glaucoma Surgery (MIGS) and all Intraoperative Gonio Procedures

- + Thornton-style stabilization ring provides maximum control of the globe
- + Floating ring design minimizes corneal pressure to prevent anterior chamber distortion
- + Visualizes angle in primary phaco position with minimal microscope and head adjustments
- + Designed in collaboration with Dr. Steven Vold and refined with doctors across the world to ensure maximum usability
- + Sterilizable by either steam autoclave or ethylene oxide (ETO)



1.20x
IMAGE MAG

Surgical Gonio Lens

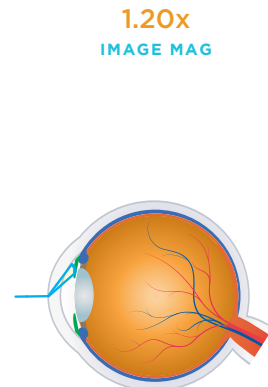


VSGACS

PRIMARY APPLICATION

Direct Views for Intraoperative Gonio Procedures

- + Lightweight titanium handle and chip resistant lens design with adjustable lens orientation
- + Enables clear visualization of the angle for surgery
- + Lens design enables comfortable positioning against the cornea
- + Lens position can be adjusted relative to the handle: for left hand and right hand or center position allowing freedom of movement
- + Applicable for MIGS procedures
- + Sterilizable by either steam autoclave or ethylene oxide (ETO)



1.20x
IMAGE MAG



“SUPERB VISUALIZATION

The Volk surgical gonioprism allows superb visualization of the angle and conforms well to the cornea with minimal coupling agent. The handle is well sized to fit under the increasing size of microscope stacks and the ability to rotate the lens allows additional surgical freedoms while maintaining positional comfort.”

- J. Morgan Micheletti, MD *Cataract, Refractive, & Anterior Segment Surgeon
Berkeley Eye Center, Houston, Texas, USA*

VOLK VOLD GONIO LENS

MICRO-INVASIVE GLAUCOMA SURGERY

A Revolution in MIGS

For maximum control, clearer angle image, and minimal corneal pressure, choose the Volk VVG Lens for Micro-Invasive Glaucoma Surgery (MIGS) and other intraoperative surgical gonio procedures.



- Stabilize and Control the Globe** with Thornton-style fixation ring
- Eliminate Anterior Chamber Distortion** floating lens minimizes pressure on the cornea
- Minimal Microscope & Head Adjustments** visualize angle in primary phaco position
- Withstands Repeat Sterilization** compatible with both steam and gas sterilization

SPECIFICATIONS

IMAGE MAG	CONTACT DIAMETER	RING DIAMETER	HANDLE LENGTH
1.20x	10.2 mm	15.2 mm	84 mm



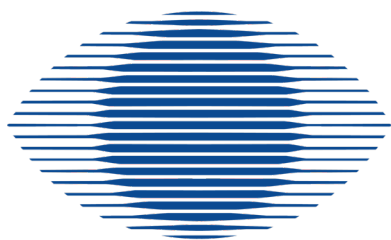
“STABILITY FOR MIGS

The floating lens and stabilizing Thornton Ring assist you with rotating the eye so you can easily visualize the trabecular meshwork... and stabilize for perfect visualization.”

- Michael S. Berlin, MD

Director of Glaucoma Institute of Beverly Hills, West Hollywood, CA, USA

DISTRIBUTORE ITALIANO



SIRoftalmica

SIR Oftalmica Srl

Via Napoleona 7

22100 - COMO

Tel. : 031-570869

info@siroftalmica.com

www.siroftalmica.com

P.IVA : 01814920136

Cell. A. Molteni: 328.1808176