



# SuperField® Lens



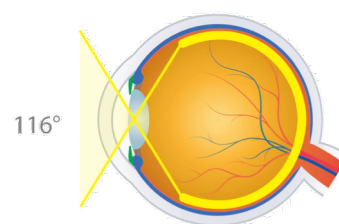
## WIDE FIELD SMALL PUPIL PAN RETINAL EXAMINATION

- + THE 'SUPER 90D' – SAME MAGNIFICATION AS THE 90D WITH A WIDER FIELD OF VIEW ENABLING BOTH POSTERIOR POLE AND PAN RETINAL EXAMINATIONS
- + PROVIDES DYNAMIC, HIGH RESOLUTION VIEWING TO THE PERIPHERY
- + COMBINES A WIDE FIELD OF VIEW WITH A COMFORTABLE WORKING DISTANCE AND MAGNIFICATION
- + CAN BE USED ON SMALL PUPILS AND PATIENTS WHO DO NOT ACCOMMODATE DILATION

95°/116°  
FIELD OF VIEW

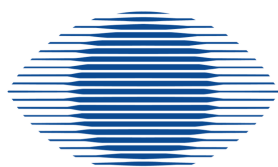
0.76x  
IMAGE MAG

1.32x  
LASER SPOT MAG



**CODICE:** VSFNC  
**CND:** Q0299  
**RDM:** 137675

| SUPER SERIES        | FIELD OF VIEW | IMAGE MAG | LASER SPOT MAG | WORKING DISTANCE | RING DIAMETER | PRIMARY APPLICATION                               |
|---------------------|---------------|-----------|----------------|------------------|---------------|---|
| Super 66*           | 80° / 96°     | 1.0x      | 1.0x           | 11 mm            | 34.5 mm       | High Magnification View of the Central Retina     |
| SuperField*         | 95° / 116°    | 0.76x     | 1.32x          | 7 mm             | 30.0 mm       | Wide Field Small Pupil Pan Retinal Examination    |
| Super VitreoFundus* | 103° / 124°   | 0.57x     | 1.75x          | 4-5 mm           | 26.7 mm       | Ultra Wide Field Small Pupil Pan Retinal Scanning |
| SuperPupil* XL      | 103° / 124°   | 0.45x     | 2.20x          | 4 mm             | 23.6 mm       | Ultra Wide Field Small Pupil Pan Retinal Scanning |



**SIR** oftalmica

DISTRIBUTING EXCELLENCE SINCE 1989

WWW.SIROFTALMICA.COM